



# PRUNER MACHINE FOR ORCHARDS 106F







### For Row Orchard Systems Or Hail Netting

Our trimmer, thanks to its two-movement topping device, is suitable for row-type training systems, especially in the presence of hail netting. Its straightforward design and constructive sturdiness make it cost-efficient to purchase and operate. The guillotine cutting system allows very hard branches to be cut ensuring great cutting quality. The side bar varying in size between 2.10 and 3.00 m can be combined with other blades for top and bottom canopy cutting as required. A fully hydraulic machine that is directly controlled by the tractor's hydraulic system. Greatly enhanced accident prevention systems compared to rotary type machines. Electro-hydraulic joystick controls are available as optional features (required for cab tractors).



### Two movement topping device

Our two-movement topping device is specially designed to avoid contact with support posts and other structures allowing rear folding of the cutter bar and a wide tilt angle to bring it to a position that does not prevent access to tight spaces.



### Suitable For Tight Spaces

Our top quality low-controlled chassis is designed for an extremely compact footprint; its top part in particular can move to the centre of the tractor, allowing access to rows with anti-hail netting with central curtain opening.





## For Goblet Trained Orchards

In the single-movement topping device version, our trimmer is particularly suitable for the requirements of goblet trained systems. Its straightforward design and constructive sturdiness make it cost-efficient to purchase and operate. The guillotine cutting system allows very hard branches to be cut ensuring great cutting quality - up to 4 cm diameters. Among its advantages are preventing an excessively large growth of the canopy with consequent shading of neighbouring plants. Annual or biennial use allows dimensions to be contained and fruiting shoots to be renewed. Branches of smaller dimensions can be treated in this way, ensuring excellent cutting quality with machine weight, dimensions and costs making this machine a best sellers among growers also thanks to its long working life.



## One movement topping device

Our one-movement topping device is designed for extensive orchard systems without support posts. The angle adjustment is hydraulic.





# PRUNER MACHINE FOR ORCHARDS 106F



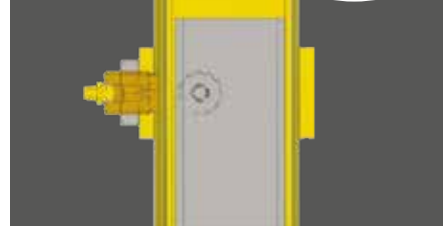
## Electro-hydraulic controls

Blocks made to our technical specifications using HydraForce US solenoid valves. A unique monobloc system carries out the filtration of the incoming oil, blocking any impurities. The control joystick is ergonomically shaped and features an on board emergency push-button.



## For A Perfect Cut

Our guillotine blade tooth system guarantees excellent cutting quality. Both tines and sections are bolted together to ensure lightning fast maintenance. Possible cuts up to 4 cm in diameter.



## Anti-Seize Systems

All the frame sliding movements are based on anti-friction systems that are easy to adjust and maintain, consisting of special silicon steel plates and adjustable and greasable bronze blocks.

## TECHNICAL SPECIFICATIONS

Vertical cutting bat	2.10 to 3.00 m
Horizontal cutting bar	0.86 to 1.65 m
Max cutting diameter	4 cm
Required hydraulic flow rate	20 to 45 l/min
Weight	180 Kg
Height shift	600 mm
Side shift	500 mm
Transverse inclination with respect to the travelling direction	+/-25°.
Electro-hydraulic controls	optional