



STRIPPING MACHINE 111-AA 

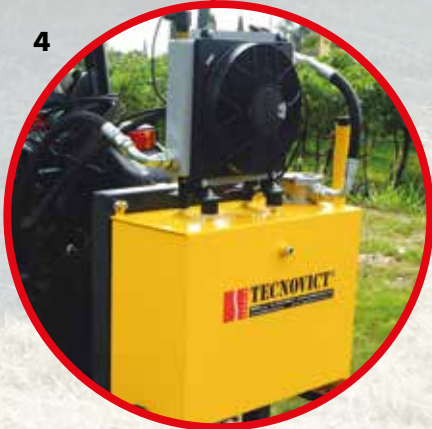
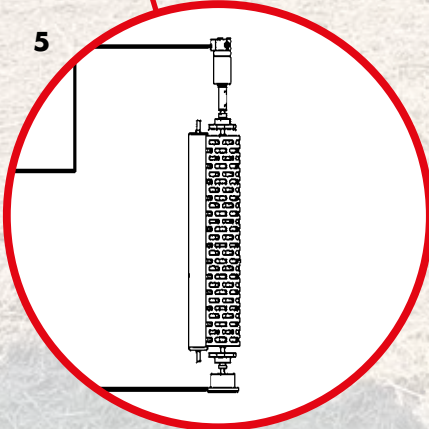
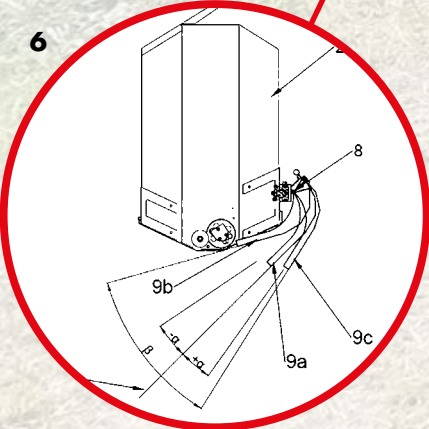


KEY POINTS

- 1. Angular position sensor of the feeler
- 2. Motorised slewing ring
- 3. Joystick for movement control
- 4. Rear hydraulic control unit
- 5. Roller tear-off system
- 6. Patented long-travel feeler



ALL CONTROLS
AND COMMANDS
ON YOUR SCREEN



THE REASONS
FOR UNIQUENESS

European Patent 2883443 protects the proportionality between the position of the feeler eyelid and the speed at which the working head moves away from and towards the canopy, with excursions of up to 80°. To comply with this patent, all other manufacturers have had to limit the excursion of their feelers to within 10°. The large range enhances the system’s ability to react with the sensitivity, gentleness and speed that are the hallmarks of the 111-AA leaf remover. For this reason, it is the machine of choice for all the most important and renowned Italian wineries, which consider it the most suitable for removing leaves without damaging the grapes.

STRIPPING INTENSITY
ADJUSTMENT

With climate change, it will become increasingly important to avoid sunburn by adjusting the stripping intensity in order to obtain the health benefits of air circulation in the bunch area, but without exposing it excessively in order to avoid harmful sunburn. The intensity can be adjusted by the operator during machine operation by simply turning a knob. The precise rev counter allows the rotation speed achieved to be displayed on the screen.

EVERYTHING
FROM THE SCREEN

The control electronics, which allow for perfect adjustment even in very different vineyards, are designed using the latest CanBus and IsoBus technologies, allowing installation on both older and more modern tractors, with the same architecture and excellent results on both. The system allows you to select four different working programmes at the touch of a button, enabling millimetre-precise adjustment of::

- distance of the grape stripping rollers,
- approach speed,
- leaving speed.

In addition, the intensity of leaf removal can be adjusted by turning the knob. Without leaving the tractor, it is possible to try out different values for each individual parameter in a matter of minutes without interrupting work, simply by switching from one working program to another and evaluating the effect in real time.

P1

500

RPM

13.1

500

RPM Motor

10

RPM Step +/-

45

Press. Max AUTO (%)

SENSOR 1°

P1	Zero Pos. (°)	Sys Resp 1	Sys Resp 2
P2	+0	2.0	2.0
P2	+0	3.0	3.0
P3	Zero Pos. (°)	Sys Resp 1	Sys Resp 2
P3	+0	6.0	6.0
P4	Zero Pos. (°)	Sys Resp 1	Sys Resp 2
P4	+0	8.0	8.0

SIMPLE
AND INTUITIVE
SCREENSHOT

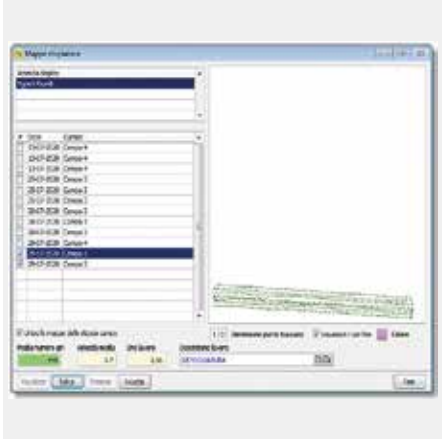
LEAF REMOVAL
EVEN BEFORE HARVESTING

The 111-AA leaf remover is a machine capable of operating successfully in all phenological phases, but it is in the pre-harvest period that it offers its most striking performance. When the machine is properly adjusted (all settings are made electronically on the control console), it is able to remove the leaves in front of the bunches with less damage than when the operation is carried out manually. In the case of **manual harvesting**, the advantage lies in a 25% to 50% reduction in harvesting time thanks to improved visibility of the bunches. In the case of **mechanised harvesting**, the preventive removal of leaves in the shaking area greatly reduces their number in the must. This factor allows for less suction when cleaning the detached grapes, avoiding hidden losses of must from the fans. It also reduces the contamination of the must caused by the release of dust from the surface of the leaves. A great help for a successful harvest.

ALWAYS LOOKING TO THE FUTURE

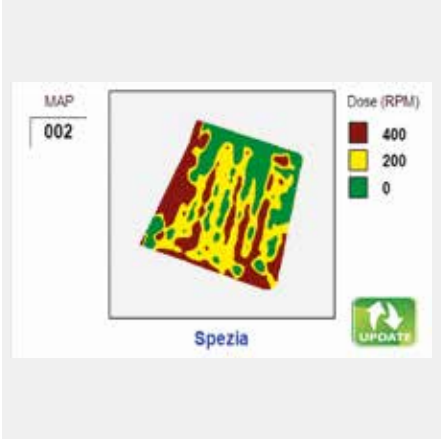
Tecnovict has innovation as its hallmark, and the developments in the evolution of our leaf removers are an example of this: we were the first in the world to build a variable-dose machine in 2010, the first to introduce remote diagnostics in 2018 and, finally, the first in the world to build a fully electric 48V machine with all the features of a hydraulic machine, in 2022.

FULL ELECTRIC 48V MODEL



VERSION 4.0 WITH REMOTE DIAGNOSTICS

In addition to the well-known advantages of two-way connection between the machine and the company information system, this version offers remote connection of the machine's electronic operating parameters to the factory or distributor server, enabling rapid diagnosis and repairs.



VARIABLE RATE VRT VERSION

The 111-AA is the only leaf remover (covered by patent 1402738 on variable rate use) that can guarantee more intensive leaf removal in those parts of the field that require it. This is thanks to the possibility of loading leaf removal maps onto the control console. A decisive step forward in the future management of autonomous tractors.



Developed in collaboration with the Agricultural Engineering Department of DISAFA at the University of Torino, this machine boasts all the same features and performance as the hydraulic machine but with enormous advantages in terms of energy savings, precision of movement control, quiet operation and no risk of environmental pollution due to hydraulic oil leaks. With the advent of tractors equipped with 48V tool sockets, we are confident that this machine has a bright future ahead of it. Awarded as Technical Innovation at EIMA 2022



ALBA VERSION

For the most extreme working conditions with high transverse slopes (typical of the Barolo and Barbaresco areas), it boasts an additional adjustment on the inclination of the working head to compensate for very high transverse slopes.



VERSION 111 EASY

For those who want an economical machine that retains many of the features of its big sister, the 111 easy has been created, available with operator-controlled approach using a joystick in the cab.



TWO LEAF REMOVAL HEIGHTS

The machine is available with a leaf strip height of 45 cm and 55 cm. This allows you to manage all forms of espalier vine cultivation.



CP1 HYDRAULIC CONTROL UNIT

The hydraulic machine is designed to work in perfect combination with the hydraulic control unit to be mounted on the rear lift. This unit is the ideal companion for other TECNOVICT machines, such as all our trimmers.



SMOOTH AND SAFE ROTATION

The working head moves from right to left thanks to a screw-type rotation table driven by a hydraulic motor. This prevents the violent shocks typical of rack-and-pinion systems.



ALWAYS CLEAN OIL

To prevent impurities from entering the solenoid valves, the machine is equipped with an oil pressure filter at the inlet of the solenoid valve block.



DEBRIS EJECTION SYSTEM

In the event of the strip rollers becoming detached from each other due to the entry of shoots or other objects between the rollers, the machine is equipped with a debris ejection system with a command to reverse the direction of rotation of the rollers. This is activated by the operator pressing the appropriate button. Once released, the rollers will return to rotating in the correct direction, allowing operations to resume without getting off the tractor.